



**Welcome to Computer Science and Networking at Wentworth!**

The Department of Computer Science and Networking is excited to welcome you as you begin your education in one of our programs! First-year students in the Computer Science and Computer Networking programs take a core set of classes that are required for their major. These introductory courses provide the foundational skills necessary for immediate and advanced coursework.

**What courses should I register for in my first year?**

**Computer Science Students Only**

Students in the Computer Science (BCOS) program complete the following courses in their first year:

Fall 2018			Spring 2019		
		Credits			Credits
COMP1000	Computer Science I	4	COMP1050	Computer Science II	4
MATH2300	Discrete Math	4	COMP1200	Computer Organization	4
MATH1775	Integrated Engineering Calculus I	4	MATH 1875	Integrated Engineering Calculus II	4
ENGLISH	English Sequence	4	ENGLISH	English Sequence	4
<b>Total:</b>		<b>16</b>	<b>Total:</b>		<b>16</b>

### Computer Networking Students Only

Students in the Computer Networking (BSCN) program complete the following classes in their first year:

Fall 2018			Spring 2019		
		Credits			Credits
<b>COMP1100</b>	<b>Introduction to Networks</b>	<b>4</b>	<b>COMP1150</b>	<b>Routing and Switching</b>	<b>4</b>
<b>COMP1000</b>	<b>Computer Science I</b>	<b>4</b>	<b>COMP1050</b>	<b>Computer Science II</b>	<b>4</b>
<b>ENGLISH</b>	<b>English Sequence</b>	<b>4</b>	<b>ENGLISH</b>	<b>English Sequence</b>	<b>4</b>
<b>MATH1500</b>	<b>Precalculus</b>	<b>4</b>	<b>MATH2300</b>	<b>Discrete Math</b>	<b>4</b>
<b>Total:</b>		<b>16</b>	<b>Total:</b>		<b>16</b>

### AP Credit

Some students may be matriculating with Advanced Placement test scores that can place them out of certain first-semester courses. Scores of 3, 4, or 5 can be used for course credit toward the following first-year courses:

Course	AP Exam
ENGL1000 – English I	English Language and Composition
ENGL1000 – English I <i>and</i> ENGL2200 – English 2	English Literature and Composition
MATH1775 – Integrated Engineering Calculus I	Calculus AB <i>or</i> Calculus BC-AB Subscore
MATH1775 – Int. Engineering Calculus I <i>and</i> MATH1875 – Int. Engineering Calculus II	Calculus BC

For a complete list of accepted AP credits and transfer credit policies, please visit:

<http://www.wit.edu/catalog/currentcatalog/academic-policies/Transfer-Credit.html>

Please get in touch with the Academic Coordinator or Department Chair about which courses you should sign up for if you are intending to apply AP credit.

**Note:** Scores for tests taken this past May are not available until July. It is advised that, in the meantime, you register for a full load of courses and make any necessary changes once your scores have been received.

For additional questions regarding AP credits, please contact:

**James E. Smith**  
**Student Service Center**  
[smithj39@wit.edu](mailto:smithj39@wit.edu), 617-989-4935

### Common Registration Problems

When you go to register for courses tomorrow, you may receive one of the following error messages:

**Closed Course:** This section is full. You should find an open section. This may involve shifting your overall schedule. The number of remaining seats within a section is noted under the column marked "Rem" on LeopardWeb. If ALL sections are full, contact the course administrator (contact info on the final page).

**Linked Course Required:** You will see this message if you try to add a lecture and lab that are not linked, or you are missing a linked course. Information on signing up for lab sections is provided below.

**Prerequisite and Test Score Error:** You are missing a prerequisite or corequisite course. Contact the course administrator for additional assistance.

It is important to be prepared in case some of the sections you originally wanted to sign up for are full. Students will not be allowed to be overridden into closed sections if there are other sections of the same class still available. If you have questions about creating a schedule, please contact the Department Coordinator.

## Signing Up for Lab Courses

**COMP1000, COMP1050, COMP1100, and COMP1150** all require you to sign up for both a **lecture** and a **lab section** simultaneously. You may only sign up for a lab section that is “linked” to the corresponding lecture session. The way to tell if a lab section is “linked” to the lecture section that you want to register for is to see if it is listed just underneath the lecture session, as pictured below:

Select	CRN	Subj	Crse	Sec	Cmp	Cred	Title	Days	Time	Cap	Act	Rem
SR	11541	COMP	1000	01	WIT	4.000	COMPUTER SCIENCE I	MWF	09:00 am- 09:50 am	25	13	12
SR	11542	COMP	1000	02	WIT	0.000	COMPUTER SCIENCE I-LAB	T	08:00 am- 09:50 am	25	13	12
SR	11543	COMP	1000	03	WIT	4.000	COMPUTER SCIENCE I	MWF	11:00 am- 11:50 am	25	10	15

As seen above, students who register for section 01 for their COMP1000 lecture must choose section 02 for their lab section. If a student tries, for example, to register for section 03 for their lecture and section 02 for the lab, they will get an error stating, “linked course required.”

## Important Contacts

Below are contacts for questions regarding courses you will be taking in your first year.

### Questions about English and Math (as well as all courses within the College of Arts and Sciences)

Lisa Manness  
Assistant to the Dean of Arts and Sciences  
304 Beatty Hall  
[mannessl@wit.edu](mailto:mannessl@wit.edu), 617-989-4370

### Department of Computer Science and Networking Contacts

David Albanese	Academic Coordinator	Dobbs 147 <a href="mailto:albanesed1@wit.edu">albanesed1@wit.edu</a> 617-989-4272
Charlie Wiseman	Department Chair	Dobbs 142 <a href="mailto:wisemanc@wit.edu">wisemanc@wit.edu</a> 617-989-4704

# Computer Science (BCOS) Tracking Sheet Catalog Year 2018-2019

**Note:** This is an example schedule; many courses are offered in other semesters (see reverse side). If you overload, withdraw, transfer, or fail courses, meet with your advisor to build a viable schedule.

## Fall

## Spring

## Summer

### Freshman (0-31 earned hours)

COMP1000 Computer Science I	3-2-4	R-L-C+
MATH2300 Discrete Math	4-0-4	
MATH1775 Integrated Eng Calculus I	4-0-4	
ENGLISH English Sequence	4-0-4	

COMP1050 Computer Science II	3-2-4	R-L-C+
COMP1200 Computer Organization	3-2-4	
MATH1875 Integrated Eng Calculus II	4-0-4	
ENGLISH English Sequence	4-0-4	

--	--	--

### Sophomore (32-63 earned hours)

COMP2000 Data Structures	3-2-4	R-L-C+
COMP2100 Network Programming	3-2-4	
MATH2860 Linear Algebra & Matrix Theory	4-0-4	
HUSS Humanities/Social Science Elective <sup>1</sup>	4-0-4	

COMP2350 Algorithms	3-2-4	R-L-C+
COMP2650 Databases	3-2-4	
MATH2100 Prob & Stats for Engineers	3-2-4	
HUSS Humanities/Social Science Elective <sup>1</sup>	4-0-4	

--	--	--

### Junior (64-95 earned hours)

COMP3400 Operating Systems	3-2-4	R-L-C+
COMP Computer Science Elective <sup>2</sup>	3-2-4	
MATHSCI Math/Science Elective <sup>3</sup>	3-2-4	
HUSS Humanities/Social Science Elective <sup>1</sup>	4-0-4	

COOP3500 Co-op Education 1 (Required)		
---------------------------------------	--	--

--	--	--

### Senior (96+ earned hours)

COOP4500 Co-op Education 2 (Required)		
---------------------------------------	--	--

COMP4960 Software Engineering	3-2-4	R-L-C+
COMP Computer Science Elective <sup>2</sup>	3-2-4	
COMP Computer Science Elective <sup>2</sup>	3-2-4	
HUSS Humanities/Social Science Elective <sup>1</sup>	4-0-4	

COMP5500 Senior Project	1-6-4	R-L-C+
COMP Computer Science Elective <sup>2</sup>	3-2-4	
MATHSCI Math/Science Elective <sup>3</sup>	3-2-4	
HUSS Humanities/Social Science Elective <sup>1</sup>	4-0-4	

+R-L-C means Recitation, Lab, and Credit hours

Updated: March 2018

## Notes

- At least one elective must be from the social sciences (COMM, ECON, POLS, PSYC, SOCL); at least one elective must be from the humanities (HIST, HUMN, LITR, PHIL); one selection must be an Ethics course
- See reverse side for elective list; at least two must be advanced CS electives
- Any science elective (except for PHS1000/PHYS1500) or any Applied Math minor course; at least one elective must be a 3-2-4 lab science
- See your degree audit and advisor first; the dept coordinator has forms

## Registration and Degree Troubleshooting<sup>4</sup>

- If you cannot register for a course **before** or **during** Drop/Add period:
- Freshmen: obtain a registration code from your advisor  
 For time conflicts or overloads, submit a **registration override form**  
 For COMP courses, submit an **override authorization form**
- To drop or add a course **after** Drop/Add period has ended:  
 Submit a **course withdrawal form** or **late registration form**  
 For courses not used in your degree, submit a **course substitution form**  
 For other degree issues, visit the student service center

## Important Contacts (other than your advisor)

COMP	Dave Albanese	Dept Coordinator	x4272
COMP	Charlie Wiseman	Dept Chair	x4704
NON-COMP	Lisa Manness	Beatty 304	x4370
Transfer	James Smith	Williston 101	x4395
COOP	Chris McIntyre	Wentworth 101	x4101
HUSS	Ron Bernier	Beatty 407	x4353
MATH	Amanda Hattaway	Ira Allen 319	x4368
MORE	See: <a href="https://wit.edu/wentworth-directory">https://wit.edu/wentworth-directory</a>		

# Computer Science (BCOS) Tracking Sheet Catalog Year 2018-2019

Please consult the latest version of this document before scheduling electives, as offerings (and semester availability) may change without notice.

## BCOS Requirements

	Fall	Spring	Summer
COMP1000 Computer Science I	•	•	
MATH2300 Discrete Math	•	•	•
MATH1750 Engineering Calculus I	•	•	
COMP1050 Computer Science II	•	•	•
MATH1850 Engineering Calculus II	•	•	•
COMP1200 Computer Organization	•	•	
COMP2000 Data Structures	•	•	
COMP2100 Network Programming	•	•	
MATH2860 Linear Algebra & Matrix Theory	•	•	
COMP2350 Algorithms	•	•	
COMP2650 Databases	•	•	
MATH2100 Prob & Stats for Engineers		•	•
COMP3400 Operating Systems		•	
COMP3350 Programming Languages		•	
COMP3450 Parallel Computing		•	
COMP4960 Software Engineering		•	
COMP5500 Senior Project		•	

## Advanced CS Electives \*

COMP4700 Artificial Intelligence
COMP3200 Assembly Language
COMP4460 Compilers
COMP4450 Systems Programming

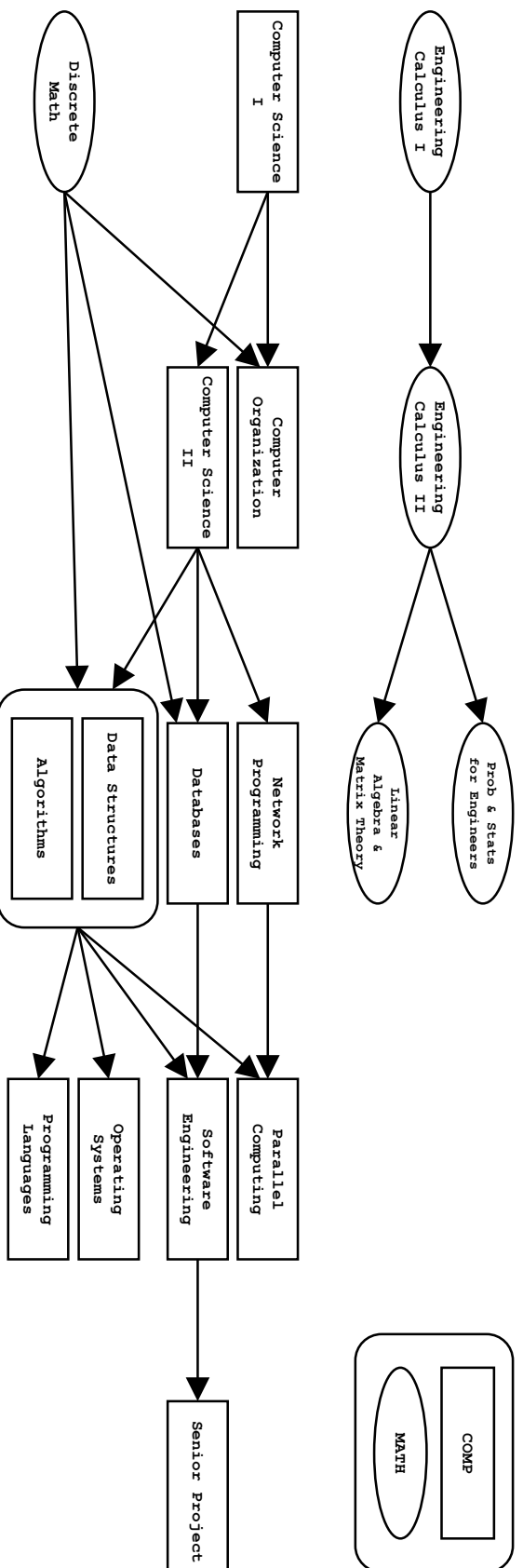
## CS Electives \*\*

COMP4150 Advanced System Administration
COMP3750 Intro to Biostatistics
COMP4050 Machine Learning
COMP3660 Mobile App Development
COMP4950 Project Management
COMP2500 Security Principles
COMP3100 System Administration
COMP4650 Web Development

## Elective Notes

- \* Advanced CS electives have at least COMP2000 & COMP2350 as prerequisites
  - \*\* Check the course catalog for prerequisite information for individual electives
- Independent/external studies require department approval
- Special topics courses require department approval to count as electives

## Prerequisite Flowchart



# Computer Networking (BSCN) Tracking Sheet Catalog Year 2018-2019

Note: This is an example schedule; many courses are offered in other semesters (see reverse side). If you overload, withdraw, transfer, or fail courses, meet with your advisor to build a viable schedule.

## Fall

## Spring

## Summer

### Freshman (0-31 earned hours)

COMP1100	Introduction to Networks	R-L-C†
COMP1000	Computer Science I	3-2-4
ENGLISH	English Sequence	4-0-4
MATH1500	Precalculus	4-0-4

COMP1150	Routing and Switching	R-L-C†
COMP1050	Computer Science II	3-2-4
ENGLISH	English Sequence	4-0-4
MATH2300	Discrete Math	4-0-4

--	--	--

### Sophomore (32-63 earned hours)

COMP1200	Computer Organization	R-L-C†
COMP2500	Security Principles	3-2-4
HUSS	Humanities/Social Science Elective <sup>1</sup>	4-0-4
MATH1030	Statistics and Applications	4-0-4

COMP2650	Databases	R-L-C†
COMP2150	Network Administration	3-2-4
COMP2160	Wireless Networks	3-2-4
HUSS	Humanities/Social Science Elective <sup>1</sup>	4-0-4

COOP3000	Pre Co-op Work Term (Optional)	
----------	--------------------------------	--

### Junior (64-95 earned hours)

COMP3500	Network Security	R-L-C†
COMP3100	System Administration	3-2-4
COMP	Computer Networking Elective <sup>2</sup>	3-2-4
HUSS	Humanities/Social Science Elective <sup>1</sup>	4-0-4

COOP3500	Co-op Education I (Required)	
----------	------------------------------	--

COMP3550	Computer Security	R-L-C†
COMP	Computer Networking Elective <sup>2</sup>	3-2-4
HUSS	Humanities/Social Science Elective <sup>1</sup>	4-0-4
MATH1900	Intro to Operations Research	4-0-4

### Senior (96+ earned hours)

COOP4500	Co-op Education 2 (Required)	
----------	------------------------------	--

COMP4950	Project Management	R-L-C†
COMP4650	Web Development	3-2-4
COMP	Computer Networking Elective <sup>2</sup>	3-2-4
HUSS	Humanities/Social Science Elective <sup>1</sup>	4-0-4

COMP5500	Senior Project	R-L-C†
COMP	Computer Networking Elective <sup>2</sup>	3-2-4
COMP	Advanced Security Elective <sup>3</sup>	3-2-4
SCIENCE	Science Elective <sup>4</sup>	3-2-4

†R-L-C means Recitation, Lab, and Credit hours

Updated: April 2018

## Notes

<sup>1</sup>At least one elective must be from the social sciences (COMM, ECON, POLS, PSYC, SOCL), at least one elective must be from the humanities (HIST, HUMN, LITR, PHIL); one selection must be an Ethics course

<sup>2</sup>See reverse side for list of Computer Networking electives

<sup>3</sup>See reverse side for list of Advanced Security electives

<sup>4</sup>Any 3-2-4 Science (BIOL, CHEM, PHYS) course

<sup>5</sup>See your degree audit and advisor first; the dept coordinator has forms

## Registration and Degree Troubleshooting<sup>5</sup>

If you cannot register for a course **before** or **during** Drop/Add period:

Freshmen: obtain a registration code from your advisor

For time conflicts or overloads, submit a **registration override form**

For COMP courses, submit an **override authorization form**

To drop or add a course **after** Drop/Add period has ended:

Submit a **course withdrawal form** or **late registration form**

For courses not used in your degree, submit a **course substitution form**

For other degree issues, visit the student service center

## Important Contacts (other than your advisor)

COMP	Dave Albanese	Dept Coordinator	x4272
COMP	Charlie Wiseman	Dept Chair	x4704
NON-COMP	Lisa Manness	Beatty 403	x4370
Transfer	James Smith	Williston 101	x4395
COOP	Chris McIntyre	Wentworth 101	x4101
HUSS	Ron Bernier	Beatty 407	x4353
MATH	Amanda Hattaway	Ira Allen 319	x4368
MORE	See: <a href="https://wit.edu/wentworth-directory">https://wit.edu/wentworth-directory</a>		

# Computer Networking (BSCN) Tracking Sheet Catalog Year 2018-2019

Please consult the latest version of this document before scheduling electives, as offerings (and semester availability) may change without notice.

## BSCN Requirements

	Fall	Spring	Summer
COMP1100 Introduction to Networks	•	•	
COMP1000 Computer Science I	•	•	
MATH1500 Precalculus	•	•	•
COMP1150 Routing and Switching	•	•	
COMP1050 Computer Science II	•	•	
MATH2300 Discrete Math	•	•	•
COMP1200 Computer Organization	•	•	
COMP2500 Security Principles	•	•	
COMP2650 Databases	•	•	
COMP2150 Network Administration		•	
COMP2160 Wireless Networks		•	
COMP3500 Network Security		•	
COMP3100 System Administration		•	
COMP3550 Computer Security			•
COMP4950 Project Management		•	
COMP4650 Web Development		•	
COMP5500 Senior Project			•

## Example Advanced Security Electives\*

Digital Forensics
Network Forensics
Public Key Cryptography
Web Security

## Example Computer Networking Electives\*

Advanced Databases
Advanced Routing and Switching
Advanced System Admin
Assembly Language
Data Center Networking
Data Structures
Medical Device Networking
Systems Analysis

## Elective Notes

\* Check the course catalog for prerequisite information for individual electives  
 Independent/external studies require department approval  
 Special topics courses require department approval to count as electives

## Prerequisite Flowchart

